

**2,000 V - 5,000 V Rectifiers**  
**0.15 A - 0.50 A Forward Current**  
**70 ns Recovery Time**

**1N6521U**  
**1N6523U**  
**1N6525U**

**SURFACE MOUNT**  
**HERMETICALLY SEALED**

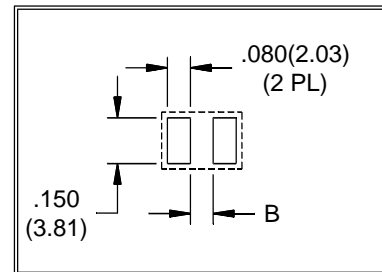
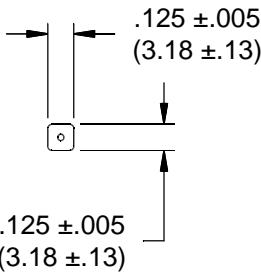
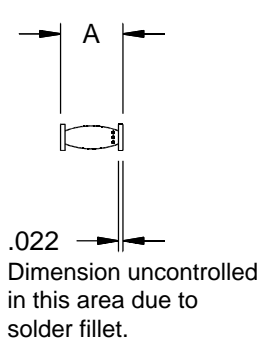


**ELECTRICAL CHARACTERISTICS AND MAXIMUM RATINGS**

Part Number	Working Reverse Voltage (V <sub>rwm</sub> )	Average Rectified Current (I <sub>o</sub> )		Reverse Current @ V <sub>rwm</sub> (I <sub>r</sub> )		Forward Voltage (V <sub>f</sub> )		1 Cycle Surge Current t <sub>p</sub> =8.3ms (I <sub>fsm</sub> )	Repetitive Surge Current (I <sub>frm</sub> )	Reverse Recovery Time (3) (T <sub>rr</sub> )	Thermal Impd. θ <sub>J-C</sub>	Junction Cap. @50VDC @1kHz (C <sub>j</sub> )
		55°C(1)	100°C(2)	25°C	100°C	25°C	25°C					
	Volts	Amps	Amps	μA	μA	Volts	Amps	Amps	Amps	ns	°C/ W	pF
1N6521U	2000	0.50	0.250	0.5	20	3.0	0.50	25	5	70	6	8
1N6523U	3000	0.25	0.125	0.5	20	5.0	0.25	15	3	70	6	4
1N6525U	5000	0.15	0.075	0.5	20	7.0	0.15	10	2	70	6	3

(1)TC=55°C (2)TC=100°C (3)I<sub>f</sub>=0.5A, I<sub>r</sub>=1.0A, I<sub>rr</sub>=0.25A \*Op. Temp.= -65°C to +175°C Stg. Temp.= -65°C to +200°C

Markings:  
 Three Dots for polarity.



Part	A	B
1N6521U	.265 ±.010 (6.73 ±.25)	.170(4.32)
1N6523U	.280 ±.010 (7.11 ±.25)	.185(4.70)
1N6525U	.300 ±.010 (7.62 ±.25)	.205(5.21)



Dimensions: In. (mm) • All temperatures are ambient unless otherwise noted. • Data subject to change without notice.

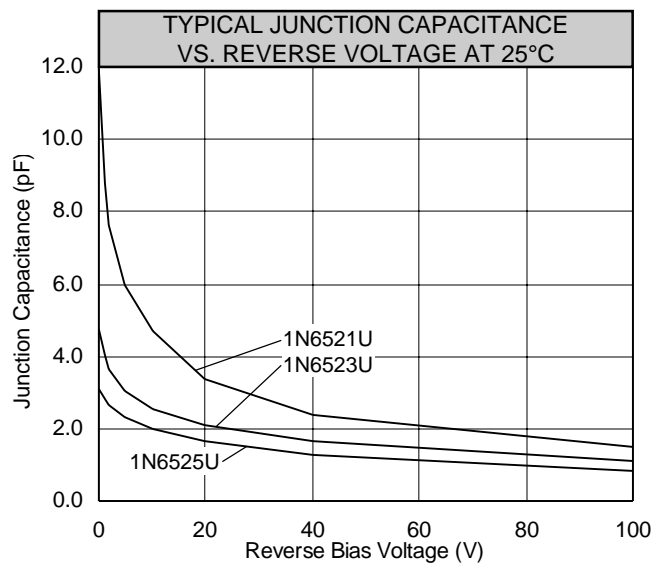
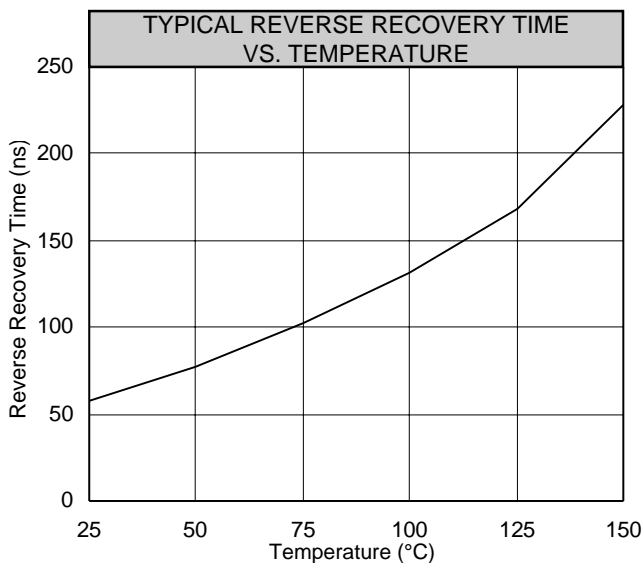
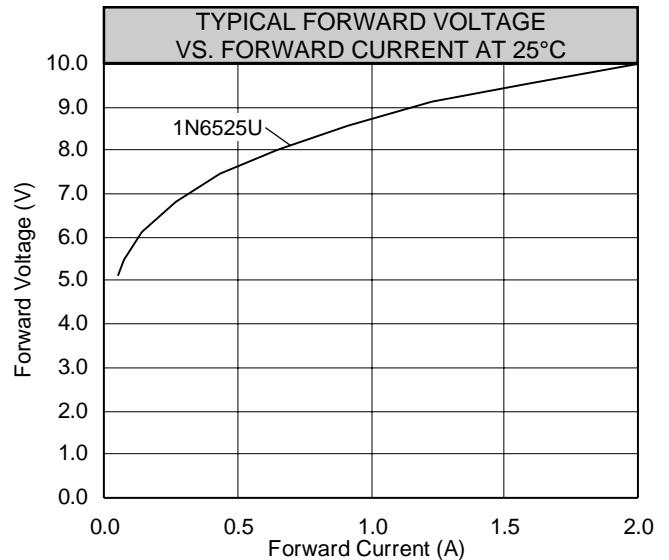
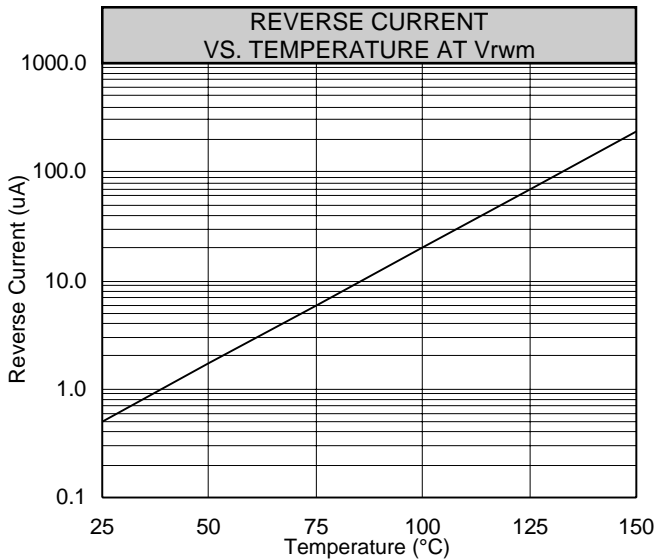
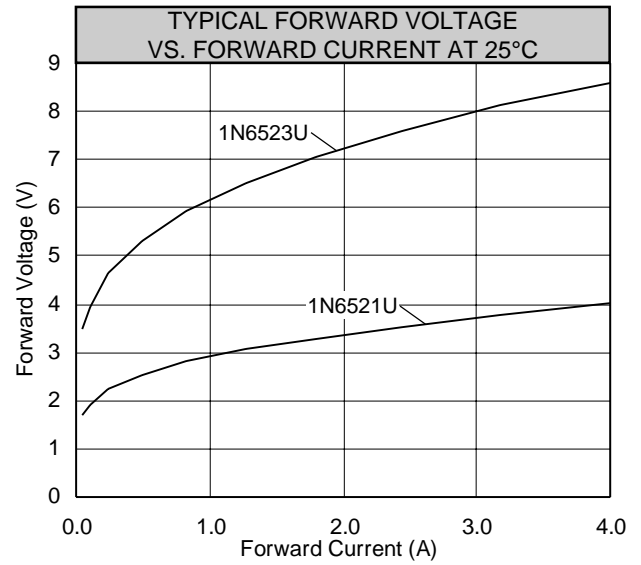
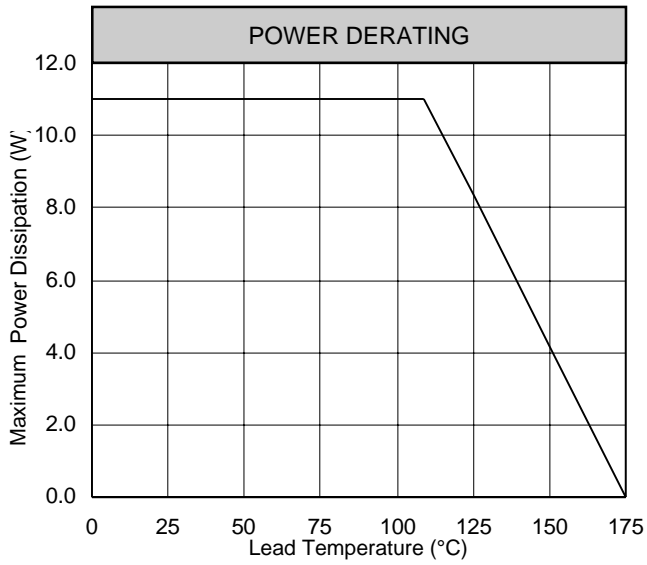


**VOLTAGE MULTIPLIERS INC.**  
 8711 W. Roosevelt Ave.  
 Visalia, CA 93291

TEL 559-651-1402  
 FAX 559-651-0740  
 www.voltagemultipliers.com

**6**

# 1N6521U 1N6523U 1N6525U



This datasheet has been downloaded from:

[www.DatasheetCatalog.com](http://www.DatasheetCatalog.com)

Datasheets for electronic components.